

## SPECIFICATIONS

**DC OUTPUT POWER:** 7 Adc at 63 Vdc maximum continuous, 11.5 Adc at 105 Vdc ten second forcing. (Forcing with 240 Vac nominal input).

**EXCITER FIELD DC RESISTANCE:** 9.0 ohms minimum; 100 ohms maximum.

**AC POWER INPUT:** Operating range: 190-277 Vac single phase, 50/60 Hz  $\pm 10\%$ . Burden 900VA.

**SENSING INPUT:** 380-480 Vac single phase, 50/60Hz  $\pm 10\%$ . Burden <5VA.

**VOLTAGE ADJUST RANGE:** 170-264 Vac.

**REGULATION ACCURACY:** Better than  $\pm 0.25\%$  no load to full load.

**RESPONSE TIME:** Less than 1.5 cycles for  $\pm 5\%$  change in sensing voltage.

**EMI SUPPRESSION:** Internal electromagnetic interference filtering.

**PARALLEL COMPENSATION:** 1 A input from a current transformer with 10VA burden @ 0.8PF.

**VOLTAGE BUILDUP:** Internal provisions for automatic voltage buildup from generator residual voltages as low as 6 Vac.

**TERMINATIONS:** 1/4 "Fast-On" Terminals.

**POWER DISSIPATION:** 35 Watts maximum.

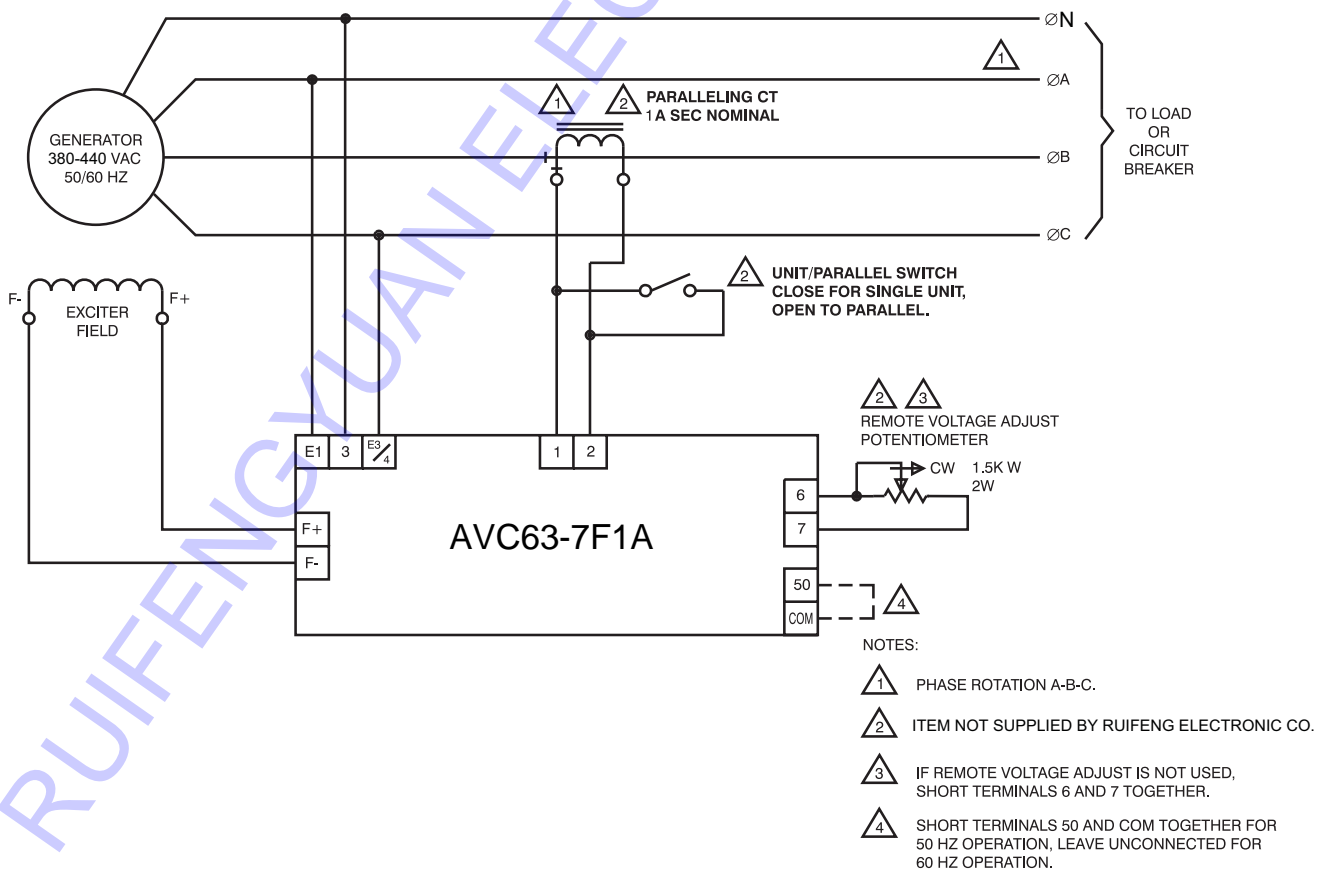
**OPERATING TEMPERATURE:**  $-40^{\circ}\text{C}$  ( $-13^{\circ}\text{F}$ ) to  $+60^{\circ}\text{C}$  ( $+140^{\circ}\text{F}$ ).

**STORAGE TEMPERATURE:**  $-40^{\circ}\text{C}$  ( $-40^{\circ}\text{F}$ ) to  $+85^{\circ}\text{C}$  ( $+185^{\circ}\text{F}$ ).

**VIBRATION:** Withstands 1.2 Gs at 5 to 26 Hz; 0.036" double amplitude at 27 to 52 Hz; and 5 Gs at 53 to 1000 Hz.

**SHOCK:** Withstands up to 15 Gs in each of three mutually perpendicular axes.

**WEIGHT:** 10 oz. (0.28 kg) Net.



**Figure 1 - Typical Interconnection Diagram**

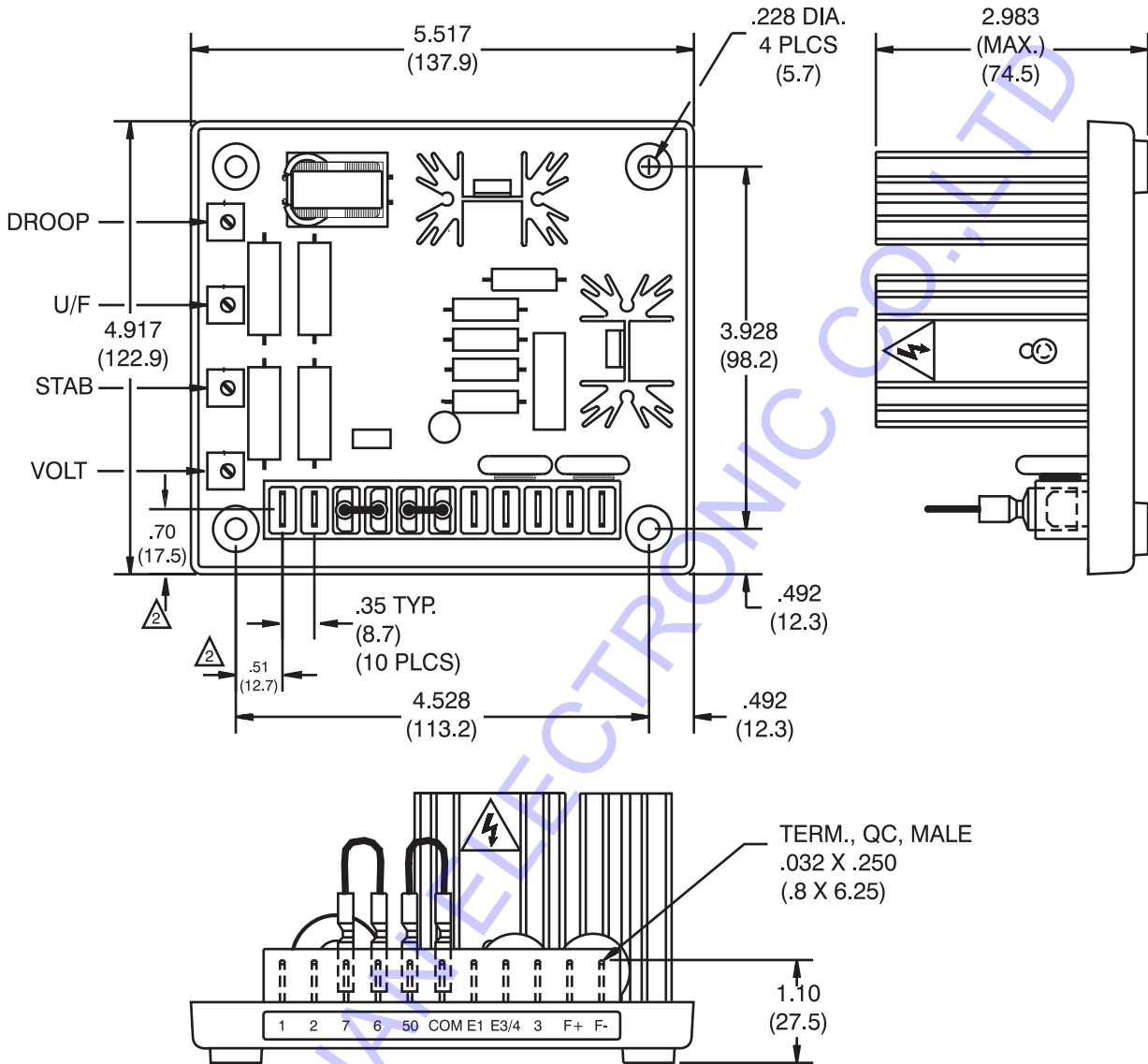


Figure 2 - Outline Drawing

NOTES:

- 1) DIMENSIONS ARE IN INCHES (MILLIMETERS).
- 2) DIMENSIONS TO TERMINALS ARE APPROXIMATE.
- 3) NET WEIGHT = 1 LB. 1 OZ.
- 4) WATTS DISSIPATED = 35 MAX.

**SPECIFICATIONS**

DC OUTPUT				EXCITER FIELD RESISTANCE		POWER INPUT		SENSING INPUT	
MAX. CONT.		MAX. FORCING 10 SEC. (120 Vac INPUT)		MIN. OHMS @ 25°C	MAX. OHMS	SINGLE PHASE VOLTAGE RANGE	BURDEN	VOLTAGE ADJUST RANGE	BURDEN
AMP	VOLT	AMP	VOLT						
7	63	11.5	105	9.0	100	190-277Vac ±10%	900VA	380-480Vac ±10%	<5VA